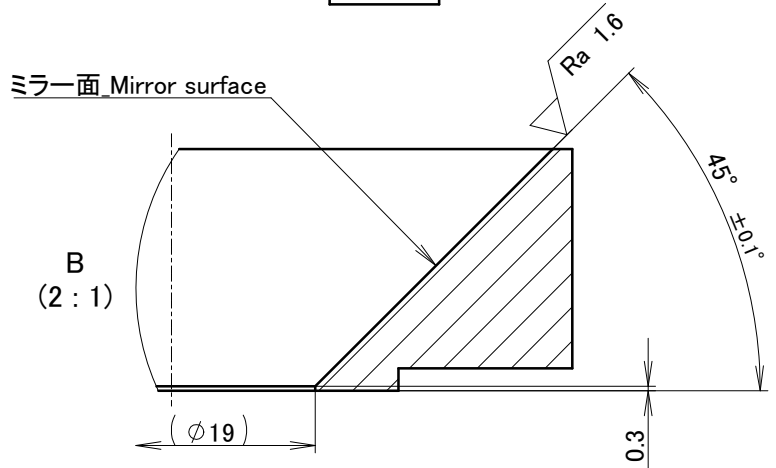
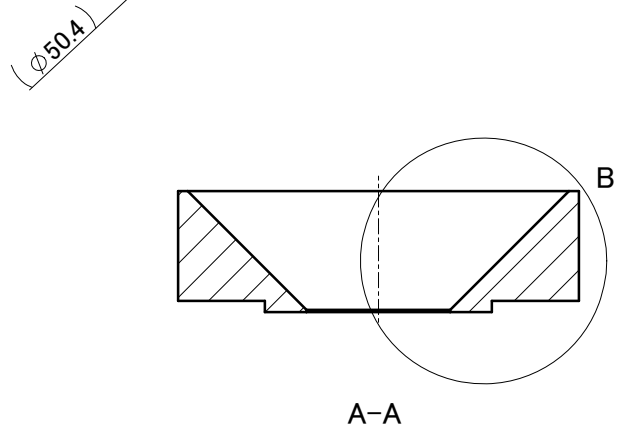
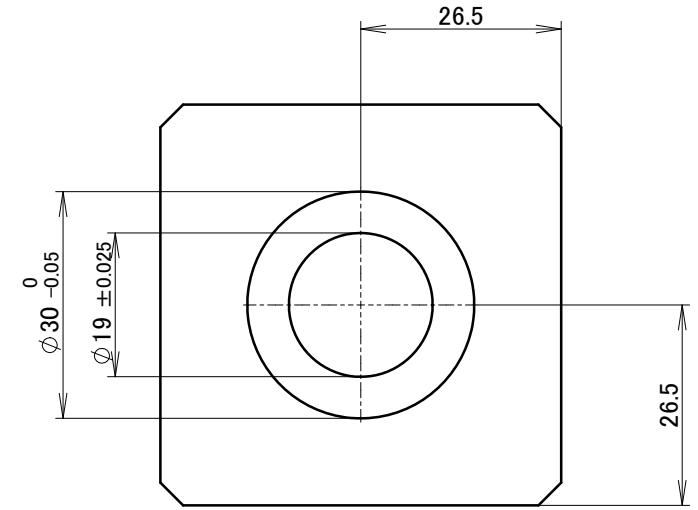
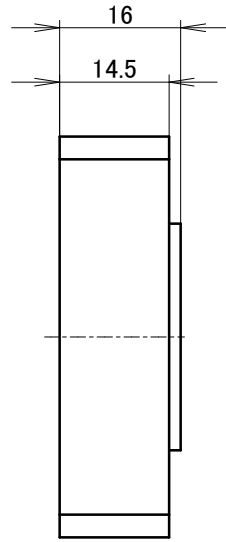
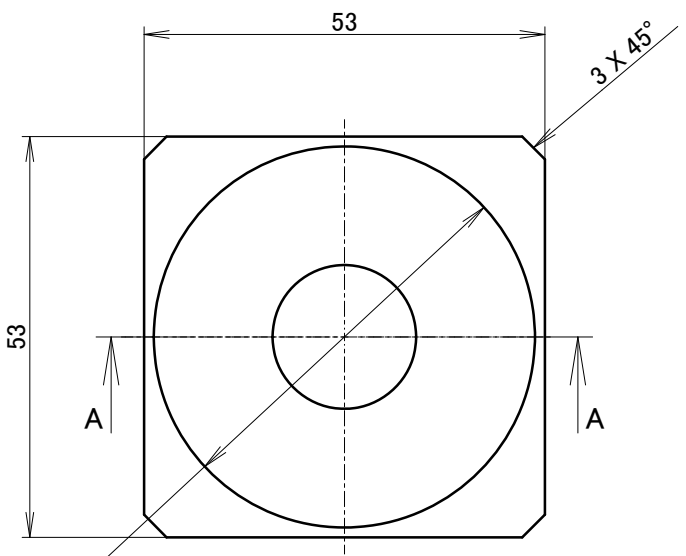


RoHS

Ra 6.3 (Ra 1.6)

Confidential

(注) Note
普通幾何公差 general geometrical tolerance
JIS B 0419-H / ISO 2768-H



【ミラーコーティング仕様_Mirror coating specifications】
R(ave.)>=85% (lambda = 400 - 700nm)
R(abs.)>=80% (lambda = 400 - 700nm)

見積用図面

• For unspecified chamfer 0.2X45°
• Measuring by scale is unacceptable.
• Dimensional tolerance other than machining parts, refer to workpiece receiving inspection standards.

ISSUE DATE		SCALE	APPROVED	MATERIAL	SURFACE TREATMENT
2022/07/05		1:1	Y.MOTOIE	A5052	図中記 Instruction in figure
MACHINING PARTS DIMENSIONAL TOLERANCE		SHEET SIZE	CHECKED	NAME	
Less or equal 1	±0.1	A4	H.SUN	ミラー_Mirror	
More than 1, Less or equal 3	±0.1		DESIGNED	DRAWING No.	
More than 3, Less or equal 30	±0.2		K.FUNAKI	REVISION	SHEET
More than 30, Less or equal 100	±0.3	PROJECTION	K.FUNAKI	DRAWING No.	
More than 100, Less or equal 300	±0.4		DRAWN	KA41275-A001	
More than 300, Less or equal 1000	±0.7		K.FUNAKI	000	01
More than 1000	±1.0				01

UNIT:mm

000			
REVISION	DATE	DESCRIPTION	REVISED